

# NOVIS® ProBlender / Instructions for Use

Contents

**Applicable Blenders  
Safety Instructions**

**Important Safety Measures**

**Care and Cleaning  
Technical Data**

**Functions  
Programs  
Electronically Controlled Speeds**

**Parts List  
Warranty**

**Before the First Use  
Preparing and Using**

**Troubleshooting  
Disposal  
Customer Service**

Page

1

2

3

4

5

6

7

## Applicable Blenders

This manual is valid for the following NOVIS Blenders:

Device	Model
<b>NOVIS® Blender</b>	<b>Pro 800 series Pro 600 series</b>

## Safety Instructions

**Your safety and the safety of others are of the utmost importance.**

Several safety recommendations are listed in this instruction manual. Please read and always take this safety advice into consideration.



Under this symbol, we warn you of any possible hazard that could cause death or injuries. All the safety recommendations explain to you the kind of danger and provide advice on how you could prevent the risk of injuries, keeping you informed of the consequences if you do not follow the recommendations.



This symbol indicates useful operation advice.

## Important Safety Measures

---



**When working with electrical equipment, the following basic safety precautions should be observed at all times:**

---

1. Read these instructions carefully.
2. To protect against the risk of electric shock, never put the NOVIS® ProBlender drive unit into water or other liquids.
3. This NOVIS® ProBlender is not suitable for use by children. People with reduced physical, sensory, or mental capabilities, and also inexperienced people should operate the NOVIS® ProBlender exclusively under the supervision or direction of someone who is responsible for their safety.
4. Children must not play with the NOVIS® ProBlender.
5. Remove the plug from the socket when you are not using or when you are cleaning the NOVIS® ProBlender.
6. If you drop the appliance or if it is damaged in any way, contact the nearest NOVIS® customer service point and have the appliance checked.
7. If the power cord is damaged, it must be replaced by the manufacturer or a qualified person in order to avoid hazards / damages.
8. Do not leave the power cord hanging over the edge of a table or work surface and protect it from heat and oil.
9. If the plug does not fit into the socket, the device must not be used.
10. NOVIS® assumes no liability if the device is used with a power adapter.
11. Do not remove the plug from the socket by pulling the power cord; do not remove the plug from the power socket with wet hands.
12. Never use defective parts.
13. Do not use the appliance outdoors.
14. Do not place the NOVIS® ProBlender on hot or wet surfaces and do not operate the appliance near open flames.
15. Do not put your hands into the container while processing food as this can cause injuries or equipment damages.
16. Always use the provided NOVIS® tamper to push down ingredients.
17. Be careful when processing hot liquids or ingredients. They might splash or emit steam, which can cause burns. When processing hot food, fill the container no more than half full.
18. As the blade is sharp, proceed carefully and do not touch any moving parts.
19. Make sure that the lid is fitted before trying to start the machine. The Wireless Safety System prevents the machine from starting when the lid and container are not installed correctly.
20. Do not try to override the Wireless Safety System.
21. Most food preparation requires a processing time of 1-3 minutes. (6 minutes for soups).
22. The NOVIS® ProBlender must not be used with an empty container.
23. The NOVIS® ProBlender is intended solely for household use and for food processing in domestic quantities. The device is not intended for commercial purposes.
24. Do not put foreign objects in the container. A foreign object found in the container might lead to injuries and defects in the device when the NOVIS® ProBlender is turned on.
25. The cutting blade is sharp. Exercise caution when putting your hand into the container for washing or drying.
26. Do not misuse the device for any other purpose than food blending, otherwise it may cause injuries or damage to the device.
27. Keep the appliance and its cord out of reach of children
28. Always disconnect the appliance from the supply if it is left unattended and before assembling, disassembling or cleaning.




**Keep these instructions for future reference.**

---

## Care and Cleaning

### Normal cleaning of the container

1. Fill the container half full with warm water.
2. Add 2-3 drops conventional washing-up liquid to the container.
3. Place the container fitted with the lid (with inserted measuring cup) correctly on the drive unit.
4. Start the cleaning program by selecting it with the program controller  and pressing the start / stop button. For For NOVIS® ProBlenders without program functions, allow the appliance to run at level 2 for about 2 minutes.
5. Rinse the container thoroughly with warm water and dry.

### Intensive cleaning of the container

1. Fill the container about half full with undiluted vinegar.
2. Place the container fitted with the lid (with inserted measuring cup) correctly on the drive unit.
3. Start the NOVIS® ProBlender on speed level 1 and increase to level 4. Allow the unit to run for about 4-5 minutes and then turn the power off.
4. Allow the vinegar to act for about 30 minutes.
5. Rinse the container thoroughly with warm water and dry.



**If there is still food residue in the container or on the blade, carry out a thorough cleaning with warm water and 2-3 drops of washing-up liquid.  
(See instructions: Normal cleaning of the container)**

### Cleaning of the lid, measuring cup and tamper

The lid, measuring cup and tamper are best cleaned with commercial washing-up liquid in warm water.




**Danger of injury: The blade of the container is sharp. Be careful when washing or drying the jug when you put your hand into the container.**



**Important: To ensure consistent quality, do not clean the container, tamper, lid and measuring cup in the dishwasher.**

## Technical data

Nominal voltage	220-240 Volt
Nominal power	1400 Watt
Frequency	50/60 Hertz
Maximum dimensions incl. 1.9L container (width x depth x height)	22 x 23 x 47 cm 8.6 x 9.1 x 18.5 Inch
Weight	5.7kg / 12.5 pounds
Cable length	1.8m / 70.9 Inch
Material of motor housing	Pressure cast
Material of jar/container	Tritan®
Test method:	 EN/IEC 60335 (IEC 60335-2-14 and IEC 60335-1)
Warranty	3 years full warranty 10 years warranty for the motor
Frequency band	119Khz-140Khz
Max output power	-53.24dBm
PCBA Hardware Version	Body: V06A - LCD: V06
Software Version	HT-SOFTWARE-034-A15011A-C- U201-V08 (20161121)

## Functions

### 1 Display (available only with NOVIS® Blender Series Pro 800)

The LCD display shows the duration of the selected program. After starting a program, the timer runs down until the program ends.

After selecting the desired speed level and pressing the Start / Stop button or Pulse button, the LCD display shows the duration of the mixing process. Thus recipes are made to exact seconds.

### 2 Program / Speed Controller

With the program / speed controller, choose a speed or a program by turning the dial (program function available only with NOVIS® ProBlender 880 and NOVIS® ProBlender 680).

### 3 Start / Stop button

Press the Start / Stop button to start and stop the selected speed stage or program. (Program function available only with NOVIS® ProBlender 880 and 680).

### 4 Pulse button

By pressing the Pulse button the NOVIS® ProBlender runs on the selected speed as long as the button is pressed.

### 5 On / Off switch (power switch)

The power switch is located on the back of the NOVIS® ProBlender. By means of the power switch, you can isolate the device from the power supply.

**Before turning on the power switch, make sure that the speed controller is set to .**

## Programs (available only with NOVIS® ProBlender 880 and 680)



### Cleaning

(See also > Care and Cleaning)



### Ice Crush

Crush some ice.



### Smoothie

For mixed smoothies.



### Frozen Desserts

For desserts that are prepared with a lot of ice, e.g. sorbet.



### Soups (warm)

The program can be controlled using the start / stop button depending on the amount and desired temperature.

## Electronically Controlled Speeds

- Level 1** For fast preparation of soft food
- Level 2** For mixing of vegetables
- Level 3** For preparation of fruit drinks
- Level 4** For preparation of mixed drinks with ice
- Level 5** For chopping of vegetables and nuts, and for the heating of food
- Turbo** For chopping of vegetables, fruits, nuts, etc.



**After some trials, you will have determined the right program selection or electronically controlled speed level for your recipes and achieve perfect food results.**

## Parts List

Check that all parts have been supplied with the product. If parts are missing please immediately contact your sales provider. In the user guide the safe handling of the supplied accessories is described:

### Measuring cup

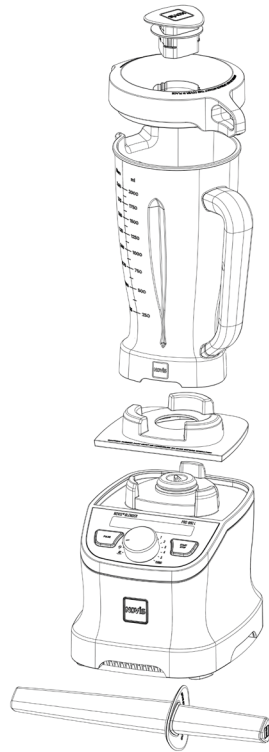
### Cover

### 1.9 L Container

### Damping/Centering Pad

### Drive Unit

### Tamper



## Warranty

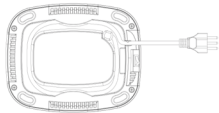
Warranty period:	NOVIS® covers the cost for:	NOVIS® does not covers the cost for:
<p>3 (three) years full warranty</p> <p>10 (ten) years warranty for the motor from date of purchase for NOVIS® ProBlender used in household only.</p>	<p>Parts and labour costs to fix the material damage and manufacturing defects. Repairs must be performed by an authorized NOVIS® customer centre.</p>	<p>Repairs to a NOVIS® ProBlender that is used in the household for purposes other than food processing. Repairs of damage caused by accidents, alterations, misuse, abuse, and installation and operation not in accordance with the local electrical regulations.</p>
<p>NOVIS® does not provide any warranty to cover incidental or consequential costs.</p>		

## Before the First Use

Place the NOVIS® ProBlender on a dry and flat surface so that the panel faces forward.

Clean all the removable parts of the NOVIS® ProBlender before the first use, and clean the drive unit with a damp cotton cloth (see Care and Cleaning).

If you place the NOVIS® ProBlender near a plug outlet, you may wind the cable in the bottom of the unit to shorten it.



**Connect the NOVIS® Blender to the power supply (AC with 220-240 V, 50/60 Hz) only after setting it up completely.**

## Preparing and Using

### Preparation and mixing of desired ingredients

1. Wash and if necessary, cut food in pieces.
2. Load the container with the pieces.
3. Add additional liquid if desired or recommended.
4. Close the lid and place the container correctly on the drive unit.
5. Select the program or speed level.
6. Start the appliance using the start/stop button or pulse button.
7. Wait until the NOVIS® ProBlender has completed the selected program or achieved the desired result with the set speed level.
8. The speed level can be changed during the food processing, if necessary.
9. The turbo function is enabled by rotating and holding the speed controller from level 5 to turbo.
10. If required, the measuring cup can be removed from the lid simply by turning it to left or right. However, the appliance should be stopped prior to the removal of the measuring cup.



- **The NOVIS® ProBlender shuts off automatically at the end of the selected program. The appliance may be shut off at any time by pressing the start/stop button or by releasing the pulse button as well as by turning the program/speed controller back to the «⏻» position.**
- **For processing most food, the speed level 3 or 4 is sufficient.**
- **Mixing at levels 4, 5 and turbo might heat the food unnecessarily. Adding ice cubes is recommended to obtain cool results.**
- **For optimal mixing or crushing, you should start the device at speed level 1 and increase it afterwards. Use the tamper provided to push food that sticks on the container wall optimally to the blade. Remove the measuring cup in the cover, and insert the tamper safely in the container.**
- **When using strongly frothing or hot foods the container should be no more than half filled.**

## Troubleshooting

In case of a malfunction, disconnect the blender completely from the power outlet. The program / speed controller should be set to the position « ⏻ » and the power switch (at the back) « ⏻ » should be set to off.

### Blender is overheated

- The NOVIS® ProBlender is equipped with an overload protection. In case of overload or overheating of the device, this character « ⚠ » appears on the display. In this case, the device will not operate as long as the warm light is still activated.
- For devices without LCD display, the overload is indicated by the rapid flashing of all program, speed and button LEDs.

### Blender does not start

- Is the NOVIS® ProBlender properly connected to the power outlet?
- Check the correct position of the lid and positioning of the container on the drive unit.
- Check the position of the damping/centering pad.

If you cannot resolve the problem, contact your sales provider or contact the address indicated in the Customer Service section.



**Repairs of NOVIS® ProBlenders may only be carried out by official service centres. Improper repairs might cause a danger for the user. No liability can be accepted for any damage and consequential damage. In this case, the warranty becomes void.**

## Disposal

In accordance with the requirements of the European Directive 2002/96 / EC on Waste Electrical and Electronic Equipment (WEEE), this appliance has a mark provided with it. Please protect the environment and the health of others by disposing of the NOVIS® ProBlender properly. Discard unusable appliances by pulling out the power plug and severing the power cable.



**This symbol indicates that the product must not be disposed with household waste. It must be brought to a suitable electrical / electronic equipment collection point for proper recycling. For information on such collection points, please contact your local authorities or point of sale.**

## Customer Service

All repairs and services must be handled locally by an authorized NOVIS® customer centre. Please contact your sales outlet or read more on the Internet: [novissa.com](http://novissa.com)

The manual can also be downloaded on [novissa.com](http://novissa.com).

### Manufacturer and Importer

Novissa Switzerland AG  
Schulstrasse 1a  
2572 Sutz, Switzerland  
T: +41 32 475 1015  
E-Mail: [info@novissa.com](mailto:info@novissa.com)